



# VOGELEI HOUSE HISTORY

The farmhouse was built by Amanda and Edward Sunderlage in 1916 for a cost of \$5,500. The farmhouse later became home to their granddaughter and her husband, Esther and Chester Christiansen.

- With a team of horses and a scraper, the basement took one week to dig out.
- The house was electrified with sixteen 32-volt batteries.

The barn burned and was replaced in 1937.

It was sold to the Hoffman Estates Park District in 1968 by the owner, Ida Vogelei, with the agreement that the park be named after her.



# **Vogeli House will offer our community...**



**Culinary  
Programs**



**Walking  
Clubs**



**Book  
Clubs**



**Afternoon  
Enrichment**



**Saturday  
Programs**



**Garden Programs  
& Therapy**



**Music Lessons  
& Therapy**



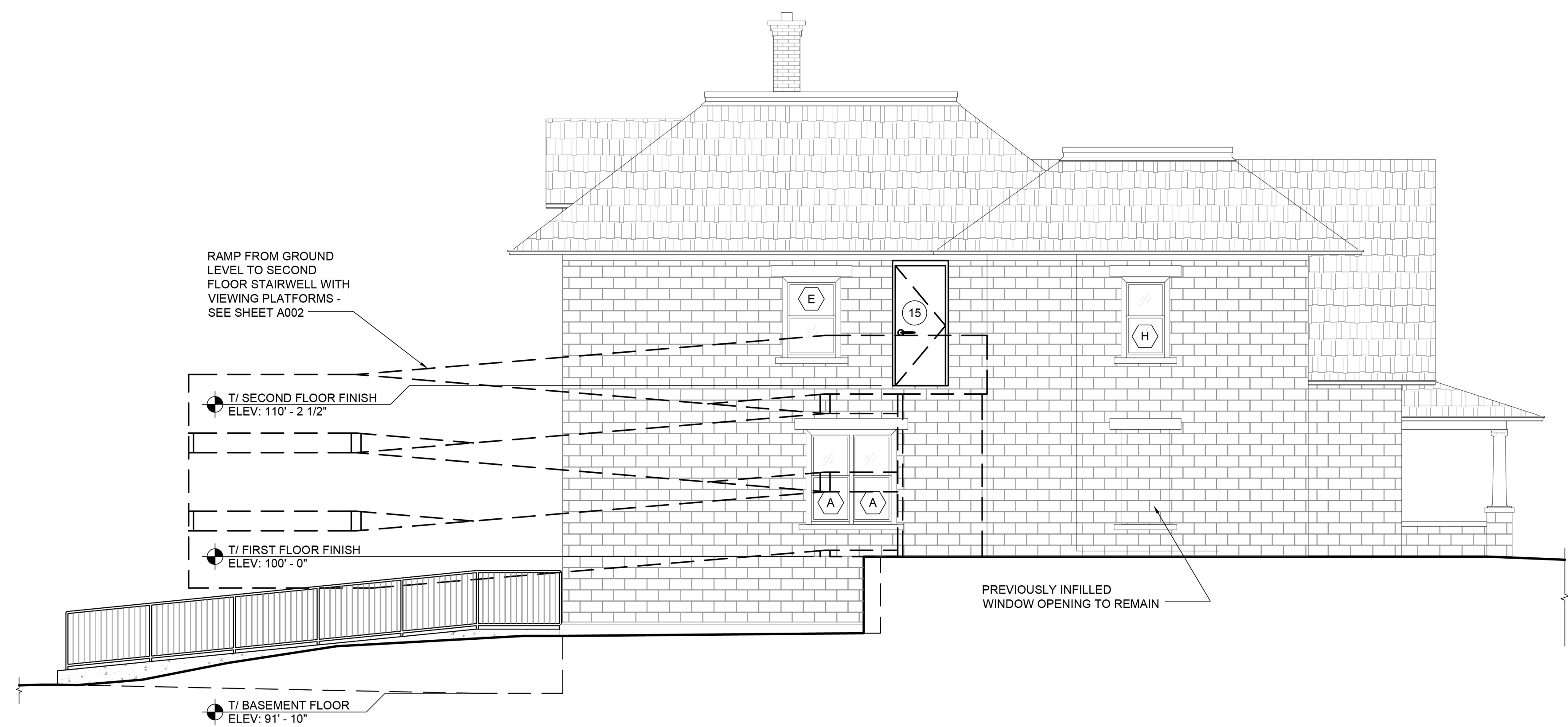
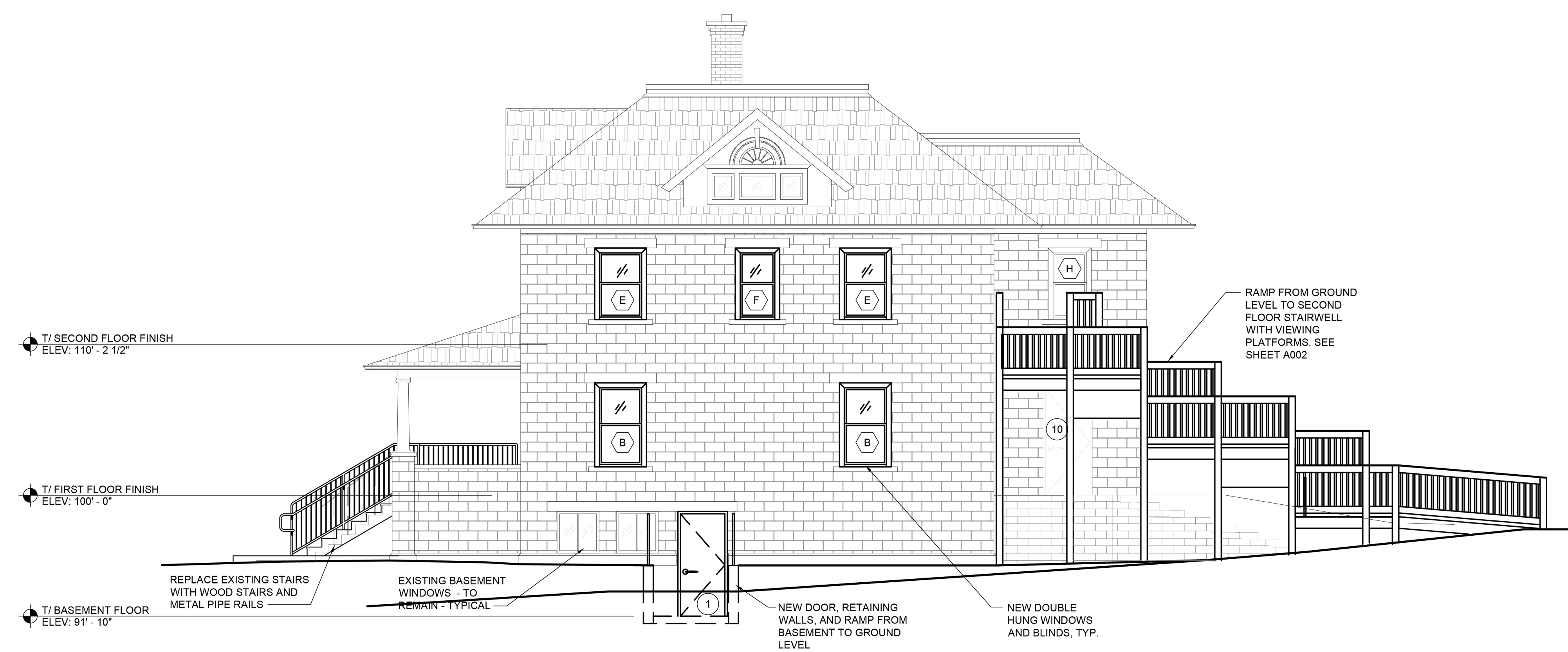
**Special  
Events**



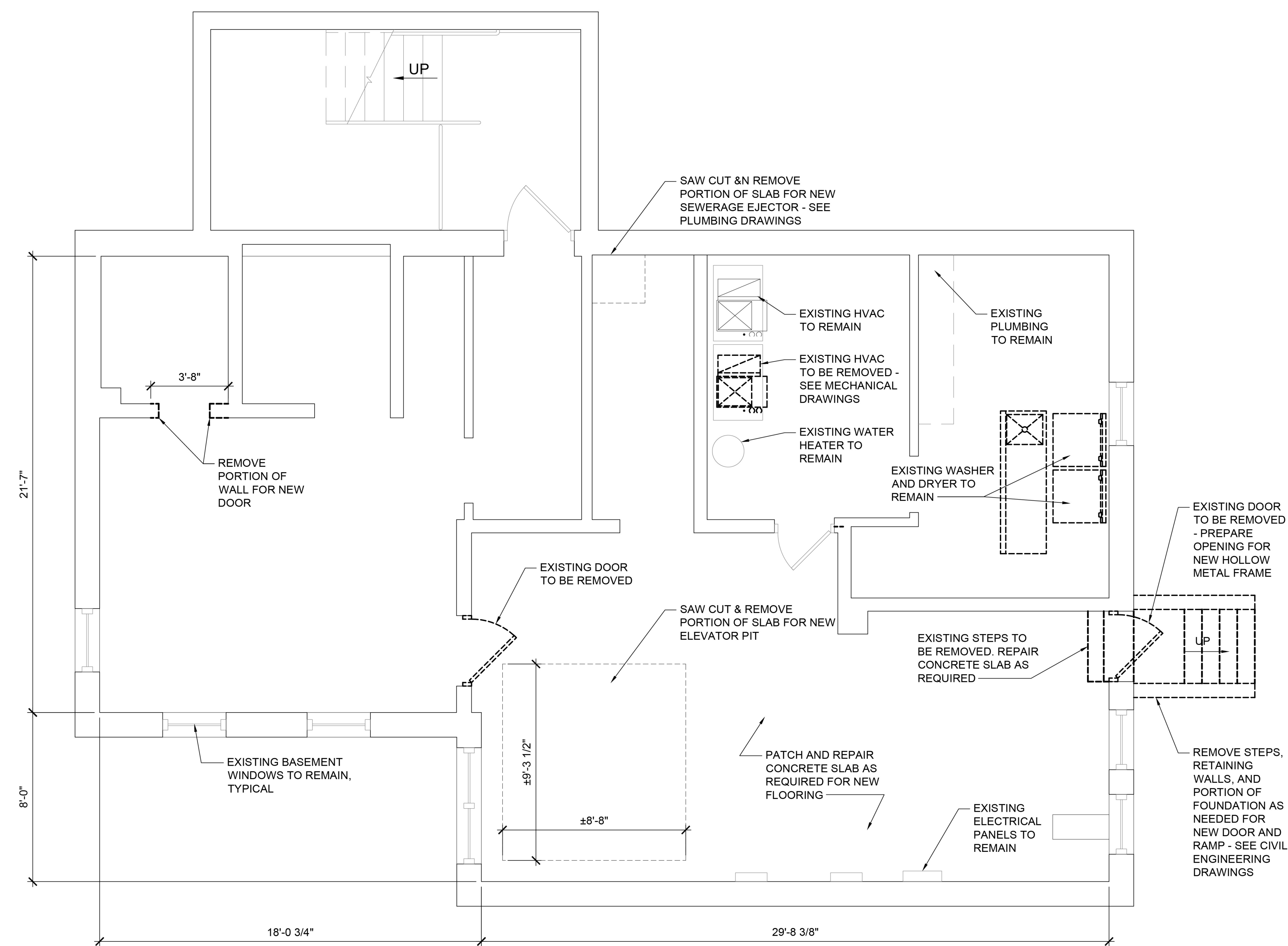
**1:1  
Programs**



# Exterior Plan



# Basement Floor Plan

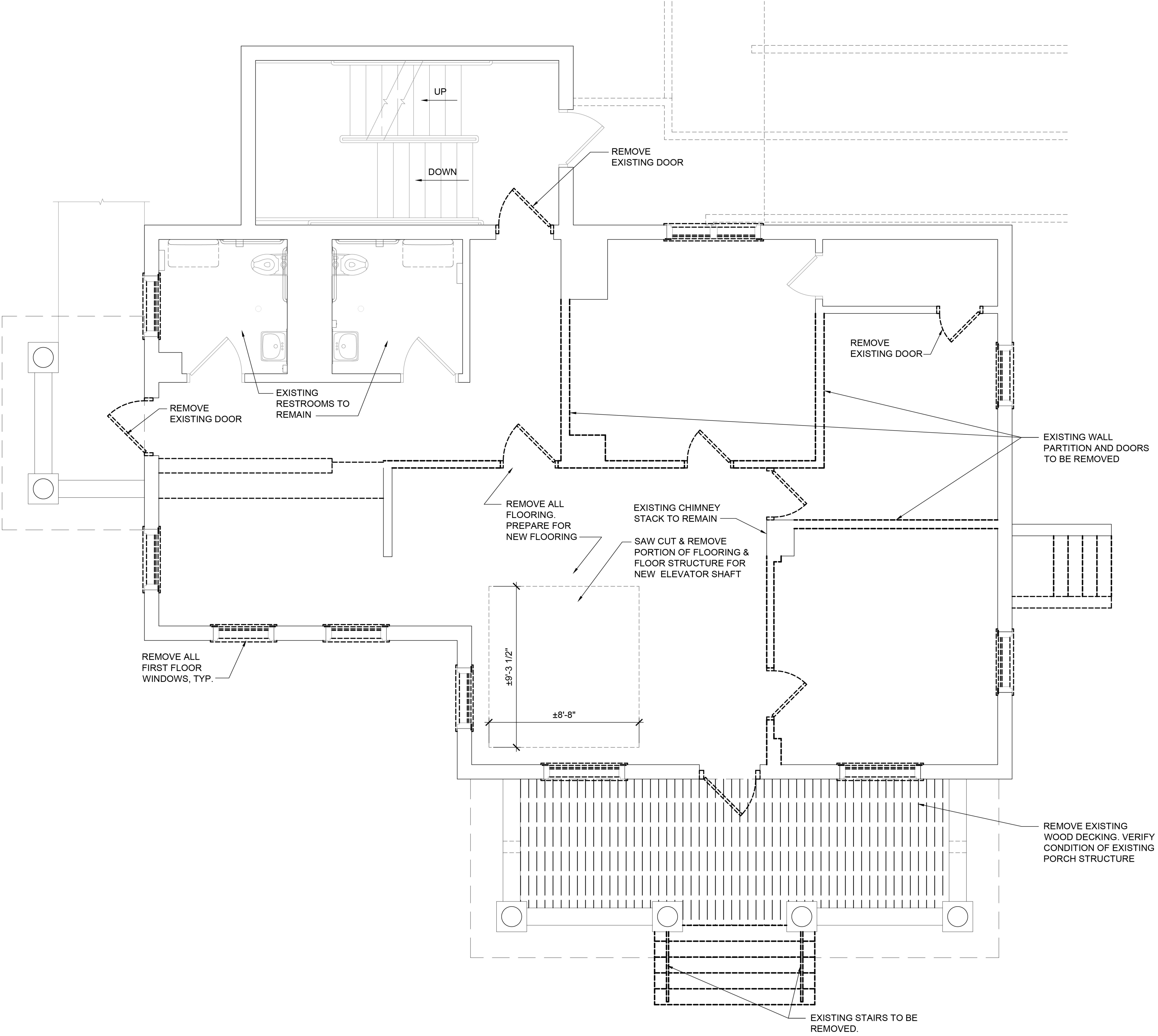


1 BASEMENT DEMOLITION FLOOR PLAN  
SCALE: 1/4" = 1'-0"

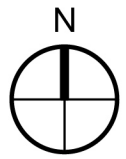




# First Floor Plan



1 FIRST FLOOR DEMOLITION PLAN  
SCALE: 1/4" = 1'-0"





# Second Floor Plan

